

Samy's Camera

RENTAL CATALOG



CAMERAS • LENSES

[SAMYS.COM/RENT](https://www.samys.com/rent)

SONY CAMERAS AND LENSES

SONY MIRRORLESS CAMERAS	1
SONY LENSES	3

CANON CAMERAS, LENSES, & ACCESSORIES

CANON MIRRORLESS CAMERAS	4
CANON DSLR CAMERAS	5
CANON LENSES	7
CANON LENSES & ACCESSORIES	8

NIKON CAMERAS, LENSES, & ACCESSORIES

NIKON MIRRORLESS CAMERAS	9
NIKON MIRRORLESS CAMERA LENSES	10
NIKON DSLR CAMERAS	11
NIKON AUTOFOCUS LENSES	12
NIKON MANUAL LENSES & ACCESSORIES	14

FUJI CAMERAS, LENSES, & ACCESSORIES

FUJIFILM MIRRORLESS CAMERAS	15
FUJIFILM LENSES & ACCESSORIES	16
FUJIFILM MEDIUM FORMAT CAMERAS	17

PANASONIC CAMERAS & LENSES

PANASONIC MIRRORLESS CAMERAS & LENSES	18
MICRO 4/3 LENSES	18

LENSES

ZEISS LENSES	19
SIGMA LENSES	20
ADAPTERS	21

MEDIUM FORMAT SYSTEMS

PHASE ONE DIGITAL CAMERA BACKS	22
PHASE ONE LENSES	23
HASSELBLAD DIGITAL CAMERA BACKS	24
HASSELBLAD H SERIES LENSES	24
HASSELBLAD CAMERAS	25
HASSELBLAD V SERIES LENSES	26
HASSELBLAD ACCESSORIES	26
MAMIYA CAMERAS	27
MAMIYA RZ LENSES	28

TABLE OF CONTENTS

COMPUTERS & DISPLAYS

APPLE MACINTOSH COMPUTERS.....	29
APPLE MACINTOSH DISPLAYS	29
EIZO DISPLAYS.....	30
SAMY'S RENTAL LOCATIONS	32
ABOUT US	34
RENTAL RATES	35
REQUIREMENTS FOR RENTING	36
TERMS & CONDITIONS.....	38

SONY SONY MIRRORLESS CAMERAS



SONY A1 Body

- 50.1-MP 35 mm full-frame stacked CMOS sensor
- Advanced BIONZ XR engine boosts speed by up to 8x
- 4.3K 16-Bit Raw Video Output, S-Cinetone

CALL

8K



SONY A9 II Body

- 24.2MP Full-Frame Exmor RS CMOS Sensor
- BIONZ X Image Processor & Front-End LS
- Up to 20 fps Shooting, ISO 100-204800

\$150.00

4K



SONY A7S III Body

- 12MP Full-Frame Exmor R BSI CMOS Sensor
- UHD 4K 120p Video, 10-Bit 4:2:2 Internal
- 759-Point Fast Hybrid AF

\$150.00

4K



SONY A7R V Body

- 61 Megapixels
- 10 fps Shooting with AF/AE Tracking
- 8K24p/4K60p recording capabilities

\$150.00

8K



SONY A7R IVa Body

- 61MP Full-Frame Exmor R BSI CMOS Sensor
- BIONZ X Image Processor & Front-End LSI
- UHD 4K30p Video w/ HLG & S-Log3 Gammas

\$125.00

4K

All mirrorless cameras include; 1 camera body, 2 batteries, 1 charger, 1 video cable, 1 USB cable.

PRICES SUBJECT TO CHANGE WITHOUT NOTICE.
ALL PRICES ARE PER DAY, UNLESS OTHERWISE INDICATED.

SONY

SONY MIRRORLESS CAMERAS



SONY A7 IV Body

- 33MP Full-Frame Exmor R CMOS Sensor
- Up to 10 fps Shooting, ISO 100-51200
- 4K 60p Video in 10-Bit, S-Cinetone

\$100.00

4K



SONY A7CR Body

- 61MP Full-Frame Exmor R BSI Sensor
- BIONZ XR Image Processor
- 10-Bit Full Frame 4K60p Video

\$100.00

4K

All mirrorless cameras include; 1 camera body, 2 batteries,
1 charger, 1 video cable, 1 USB cable.

PRICES SUBJECT TO CHANGE WITHOUT NOTICE.
ALL PRICES ARE PER DAY, UNLESS OTHERWISE INDICATED.

SONY SONY LENSES



- 14mm f/1.8 \$45.00
- 16mm f/2.8* \$30.00
- 24mm f/2.8 G \$25.00
- 28mm f/2 FE \$30.00
- 35mm f/1.4 G \$45.00
- 35mm f/1.4 FE ZEISS ... \$40.00
- 35mm f/2.8 FE \$30.00
- 40mm f/2.5 G \$25.00
- 50mm f/1.2 \$45.00
- 50mm f/1.4 \$40.00
- 50mm f/1.8 \$20.00
- 50mm f/2.5 G \$25.00
- 55mm f/1.8 \$30.00
- 85mm f/1.4 GM \$45.00
- 85mm f/1.8 \$30.00
- 90mm f/2.8 FE Macro . \$35.00
- 100mm f/2.8 STF \$40.00
- 135mm f/1.8 GM \$45.00
- 10-18mm f/4 E DX* \$40.00
- 12-24mm f/4 G \$40.00
- 16-35mm f/4 FE \$35.00
- 16-35mm f/2.8 GM \$45.00
- 16-70mm f/4.0* \$35.00
- 18-105mm f/4 G E PZ*.. \$30.00
- 18-200mm f/3.5* \$40.00
- 24-70mm f/2.8 G \$50.00
- 24-70mm f/2.8 FE GM OSS II...
.....\$55.00
- 24-70mm f/4.0 FE \$30.00
- 24-240mm f/3.5-6.3.... \$35.00
- 28-70mm f/3.5-5.6 \$20.00
- 28-135mm f/4 PZ OSS FE.....
.....\$45.00
- 70-200mm f/2.8 GM II. \$55.00
- 70-200mm f/2.8 G \$50.00
- 70-200mm f/4.0 FE..... \$40.00
- 70-200mm f/4.0 G OSS II.....
.....\$40.00
- 70-300mm f/4.5-5.6 G OSS.....
.....\$40.00
- 100-400mm f/4.5-5.6 GM OSS
.....\$50.00
- 200-600mm f/5.6-6.3 G
.....\$50.00
- 400mm f/2.8 GM \$250.00
- 600mm f/4 GM OSS ...\$275.00

*Not full frame.



ZEISS LENSES (SONY E-MOUNT)

- 18mm F2.8 Batis FE.....\$35.00
- 25mm F2.0 Batis FE.... \$35.00
- 85mm F1.8 Batis FE ... \$35.00
- Loxia 21mm F2.8 FE.....\$35.00
- Loxia 35mm F2.0 FE ... \$35.00
- Loxia 50mm F2.0 FE ... \$35.00
- Loxia 85mm F2.4 FE.....\$35.00

Sigma E mount available, please call.

PRICES SUBJECT TO CHANGE WITHOUT NOTICE.
ALL PRICES ARE PER DAY, UNLESS OTHERWISE INDICATED.



CANON MIRRORLESS CAMERAS



Canon EOS R3 Body

- 24MP Full-Frame Stacked BSI CMOS Sensor
- Dual Pixel CMOS AF II, Eye Control AF

CALL

6K



Canon EOS R5C Body

- 45MP Full-Frame 8K CMOS Sensor
- Photo/Video Switch Changes Menu

\$200.00

8K



Canon EOS R5 Body

- 45MP Full-Frame CMOS Sensor
- DIGIC X Image Processor

\$150.00

8K



Canon EOS R6 Mark II Body

- 24.2 Megapixel Full-Frame CMOS Sensor
- External 6K ProRes RAW Recording

\$100.00

6K



Canon EOS R8 Body

- 24.2MP Full-Frame CMOS Sensor
- 4K60p 10-Bit Internal Video, Canon Log 3

\$85.00

4K

Lenses



- RF 5.2mm Dual Fisheye...\$55.00
- RF 14-35mm f/4..... \$45.00
- RF 15-35mm f/2.8 \$45.00
- RF 24-70mm f/2.8 \$45.00
- RF 24-105mm f/4 \$35.00
- RF 28-70mm f/2 \$55.00
- RF 70-200mm f/2.8..... \$50.00
- RF 100-400mm f/5.6-8 ..\$30.00
- RF 100-500mm f/4.5-7.1\$45.00
- RF 28mm f/2.8 STM.....\$20.00
- RF 35mm f/1.8..... \$30.00
- RF 50mm f/1.2..... \$50.00
- RF 50mm f/1.8..... \$25.00
- RF 85mm f/1.2..... \$50.00
- RF 100mm f/2.8 \$40.00
- RF 400mm f/2.8..... \$250.00
- RF 600mm f/4..... \$250.00
- RF 800mm f/11 \$50.00
- RF 18-150mm f/3.5-6.3 \$20.00
(Not Full Frame)
- RF 100-300mm f2.8...\$250.00
- RF 1200mm f/8 L IS USM...\$350

Accessories

- EF to EOS R Adapter Ring \$20.00
- EF to EOS R Control Ring \$20.00

All mirrorless cameras include; 1 camera body, 2 batteries, 1 charger, 1 video cable, 1 USB cable.

PRICES SUBJECT TO CHANGE WITHOUT NOTICE.
ALL PRICES ARE PER DAY, UNLESS OTHERWISE INDICATED.

Canon CANON DSLR CAMERAS



EOS 1Dx Mark III

- 20.1MP Full-Frame CMOS Sensor
- DIGIC X Image Processor
- EOS iTR AF X 191-Point AF System

\$300.00

4K



EOS 1Dx Mark II

- 20.2MP Full-Frame CMOS Sensor
- Dual DIGIC 6+ Image Processors
- 3.2" 1.62m-Dot Touchscreen LCD Monitor

\$225.00

4K



EOS 5D Mark IV

- 30.4MP Full-Frame CMOS Sensor
- DIGIC 6+ Image Processor
- 3.2" 1.62m-Dot Touchscreen LCD Monitor

\$125.00

4K



EOS 5DS

- Dual DIGIC 6 Image Processors
- 3.2" 1.04m-Dot ClearView II LCD Monitor
- Full HD 1080p Video Recording at 30 fps
- Time Lapse movie function
- EOS Scene Detection System with the 150,000-pixel RGB+IR metering sensor provides precise exposure and color metering

\$125.00



EOS 5DS R

- 50.6MP Full-Frame CMOS Sensor
- Dual DIGIC 6 Image Processors
- Low-Pass Filter Effect Cancellation
- 3.2" 1.04m-Dot ClearView II LCD Monitor

\$125.00

All DSLR cameras include; 1 camera body, 2 batteries, 1 charger, 1 video cable, 1 USB cable.

PRICES SUBJECT TO CHANGE WITHOUT NOTICE.
ALL PRICES ARE PER DAY, UNLESS OTHERWISE INDICATED.

Canon CANON DSLR CAMERAS



EOS 6D Mark II

\$75.00

- 26.2 Megapixel Full-frame CMOS Sensor
- DIGIC 7 Image Processor
- 45-Point All-Cross Type AF System
- Dual Pixel CMOS AF with Phase-detection & Full HD 60p



EOS 7D Mark II

\$50.00

- 20.2MP APS-C CMOS Sensor
- Dual DIGIC 6 Image Processors
- Full HD 1080p/60 Video & Movie Servo AF
- Native ISO 16000, Extended to ISO 51200
- Built-In GPS Receiver & Digital Compass



EOS 80D

\$50.00

- 24.2MP APS-C CMOS Sensor
- DIGIC 6 Image Processor
- Full HD 1080p Video Recording at 60 fps
- 45-Point All Cross-Type AF System
- Expanded ISO 25600, up to 7 fps shooting



EOS 80D Video Creator Kit

\$100.00

Includes EF-S 18-135mm f/3.5-5.6 IS USM lens, RODE VideoMic GO and PZ-E1 Power Zoom Adapter

- 24.2 Megapixel (APS-C) CMOS sensor
- Dual Pixel CMOS AF, Full HD 60p
- 45-point all cross-type AF system
- DIGIC 6 Image Processor

All DSLR cameras include; 1 camera body, 2 batteries, 1 charger, 1 video cable, 1 USB cable.

PRICES SUBJECT TO CHANGE WITHOUT NOTICE.
ALL PRICES ARE PER DAY, UNLESS OTHERWISE INDICATED.

Canon CANON LENSES

Wide Angle

- EF 14mm f/2.8 II USM\$40.00
- EF 15mm f/2.8 Fish Eye\$30.00
- EF 20mm f/2.8 USM\$20.00
- EF 24mm f/1.4 L II USM\$40.00
- EF 24mm f/2.8\$16.00
- EF 28mm f/1.8 USM.....\$25.00
- EF 28mm f/2.8\$16.00
- EF 35mm f/1.4 L USM\$40.00
- EF 35mm f/1.4 II\$45.00
- EF 35mm f/2.0\$16.00
- EF 35mm f/2 IS USM\$40.00
- EF 40mm F2.8 STM.....\$20.00



Normal

- EF 50mm f/1.2 L USM\$40.00
- EF 50mm f/1.4 USM.....\$20.00
- EF 50mm f/1.8 II.....\$15.00
- EF 50mm f/2.5 Macro\$20.00
- EF-S 60mm f/2.8 Macro*\$20.00
- MP-E 65mm f/2.8 1x-5x Macro.....\$50.00

Telephoto

- EF 85mm f/1.2L II USM\$45.00
- EF 85mm f/1.8 USM.....\$20.00
- EF 85mm f/1.4L IS USM\$45.00
- EF 100mm f/2.0 USM\$25.00
- EF 100mm f/2.8L IS USM Macro\$30.00
- EF 135mm f/2.0L USM.....\$35.00
- EF 180mm f/3.5 Macro L\$30.00
- EF 200mm f/2.0 L IS USM\$100.00
- EF 200mm f/2.8 II USM.....\$30.00
- EF 300mm f/2.8L IS II USM\$100.00
- EF 300mm f/4.0L IS USM\$30.00
- EF 400mm f/2.8L II USM\$200.00
- EF 400mm f/5.6L USM\$30.00
- EF 400mm f/2.8L IS III USM\$250.00
- EF 500mm f/4.0L IS II USM\$150.00
- EF 600MM F4L IS III USM.....\$200.00
- EF 800mm f/5.6 IS USM.....\$275.00

Tilt-Shift

- 17mm f/4.0 L TS-E\$55.00
- 24mm f/3.5 II TS-E\$55.00
- 45mm f/2.8 TS-E.....\$40.00
- 90mm f/2.8 TS-E.....\$40.00
- 135mm f/4L Macro TS-E\$55.00

*Not full-frame lens.

PRICES SUBJECT TO CHANGE WITHOUT NOTICE.
ALL PRICES ARE PER DAY, UNLESS OTHERWISE INDICATED.

Canon CANON LENSES & ACCESSORIES

Zoom Lenses

- EF 8-15mm f/4L Fisheye\$50.00
- EF-S 10-22mm f/3.5-4.5*\$30.00
- EF 11-24mm f/4L USM.....\$55.00
- EF 16-35mm f/2.8 II USM.....\$40.00
- EF 16-35mm f/2.8 III USM.....\$45.00
- EF-S 17-55mm f/2.8L*\$35.00
- EF-S 17-85MM f/4-5.6 IS*\$30.00
- EF 17-40mm f/4L\$30.00
- EF 24-70mm f/2.8 II USM\$40.00
- EF 24-70mm f/4 IS\$30.00
- EF 24-105mm f/4 L USM.....\$35.00
- EF 28-105mm f/3.5-4.5 USM\$25.00
- EF 28-135mm f/3.5-5.6 IS\$30.00
- EF 28-200mm f/3.5-5.6\$35.00
- EF 28-300mm f/3.5-5.6 IS.....\$35.00
- EF 70-200mm f/2.8L IS III\$45.00
- EF 70-200mm f/2.8L IS II\$40.00
- EF 70-200mm f/4.0L IS\$30.00
- EF 70-300mm f/4-5.6 IS.....\$40.00
- EF 70-300mm f/4-5.6L.....\$40.00
- EF 75-300mm f/4.5-5.6 DO IS\$35.00
- EF 100-400mm f/4.5-5.6L IS II\$45.00
- EF 200-400mm f/4L IS 1.4 EXT\$225.00

Canon Flashes & EOS Accessories

- 600 EX RT II.....\$30.00
- 600 EX RT.....\$30.00
- Speedlite EL-1.....\$45.00
- Off Shoe Camera Adapter\$10.00
- EF Extender 1.4X.....\$20.00
- EF Extender 2.0X II\$20.00
- Remote TC80N3\$15.00
- Gary Fong Lightsphere\$10.00



ROKINON ROKINON CINE DS LENSES (EF MOUNT)



- 14mm T3.1 DS.....\$40.00
- 24mm T1.8 DS.....\$40.00
- 35mm T1.5 DS.....\$40.00
- 50mm T1.5 DS.....\$40.00
- 85mm T1.5 DS.....\$40.00

*Not full-frame lens.

PRICES SUBJECT TO CHANGE WITHOUT NOTICE.
ALL PRICES ARE PER DAY, UNLESS OTHERWISE INDICATED.



NIKON MIRRORLESS CAMERAS



Nikon Z9 Body

- 45.7MP FX-Format Stacked CMOS Sensor
- EXPEED 7 Image Processor
- 8K30p and 4K120p Video, 10-Bit Internal

\$200.00

8K



Nikon Z8 Body

- 45.7MP FX-Format Stacked CMOS Sensor
- 8.3K 60p N-RAW, 4.1K 60p ProRes RAW
- 8K30p and 4K120p Video, 10-Bit Internal

\$125.00

8K



Nikon Z7 II Body

- 45.7MP FX-Format BSI CMOS Sensor
- Dual EXPEED 6 Image Processors
- UHD 4K60 Video; N-Log & 10-Bit HDMI Out

\$65.00

4K



Nikon Z6 II Body

- 24.5MP FX-Format BSI CMOS Sensor
- Dual EXPEED 6 Image Processors
- UHD 4K30 Video; N-Log & 10-Bit HDMI Out

\$55.00

4K



Nikon Zf Body

- 24.5 MP FX-Format BSI CMOS Sensor
- EXPEED 7 Image Processor
- UHD 4K30 Video

\$45.00

4K



Nikon Z5 Body

- 24.3 MP full frame CMOS sensor
- EXPEED 6 Image Processor
- UHD 4K30 Video

\$45.00

4K

All mirrorless cameras include; 1 camera body, 2 batteries, 1 charger, 1 video cable, 1 USB cable.

PRICES SUBJECT TO CHANGE WITHOUT NOTICE.
ALL PRICES ARE PER DAY, UNLESS OTHERWISE INDICATED.



NIKON MIRRORLESS CAMERA LENSES

Lenses

- Z 20mm f/1.2.....\$50.00
- Z 20mm f/1.8.....\$45.00
- Z 24mm f/1.8.....\$25.00
- Z 26mm f/2.8.....\$25.00
- Z 35mm f/1.8 S.....\$45.00
- Z 35mm f/1.8.....\$45.00
- Z 50mm f/1.8.....\$25.00
- Z 58mm f/0.95 Noct.....\$200.00
- Z 85mm f/1.2.....\$50.00
- Z 85mm f/1.8.....\$25.00
- Z 105mm micro f/2.8.....\$30.00
- Z 135mm f/1.8 S Plena.....\$50.00
- Z 400mm f/4.5 VR-S.....\$75.00
- Z 14-24mm f/2.8.....\$50.00
- Z 17-28mm f/2.8.....\$45.00



- Z 24-50mm f/4-6.3.....\$20.00
- Z 24-70mm f/2.8.....\$50.00
- Z 24-70mm f/4.....\$30.00
- Z 24-120mm f/4.....\$45.00
- Z 28-75mm f/2.8.....\$25.00
- Z 35-150mm f/2-2.8.....\$50.00
- Z 70-180mm f/2.8.....\$45.00
- Z 70-200mm f/2.8 VR.....\$50.00
- Z 100-400mm f/5.6.....\$45.00
- Z 180-600mm.....Coming Soon

Accessories

- FTZ II Mount Adapter.....\$20.00



NIKON DSLR CAMERAS



Nikon D5

- 20.8MP FX-Format CMOS Sensor
- 4K UHD Video Recording at 30 fps
- Multi-CAM 20K 153-Point AF System

\$225.00

4K



Nikon D850

- 45.7MP FX-Format BSI CMOS Sensor
- EXPEED 5 Image Processor
- 4K UHD Video Recording at 30 fps

\$125.00

4K

Battery Grips for D850

\$20.00



Nikon D780

- 51200 Maximum ISO
- 3.2" LCD Screen Size
- 12 fps Continuous Shooting
- 4K Video Resolution

\$100.00

4K



Nikon D750

- Effective Megapixels: 24.3, Full-Frame
- 6.5 FPS Continuous Shooting
- 100-12,800 ISO Expandable to 51,200
- Full HD 1080p at 60/50/30/25/24p

\$85.00



Nikon D500

- 20.9MP DX-Format CMOS Sensor
- 4K UHD Video Recording at 30 fps
- ISO range of 100-51,200 expandable to Lo 1 and Hi 5

\$75.00

4K



Nikon D7500

- 20.9MP DX-Format CMOS Sensor
- EXPEED 5 Image Processor
- 3.2" 922k-Dot Tilting Touchscreen LCD
- 4K UHD Video Recording at 30 fps

\$75.00

4K

All DSLR cameras include; 1 camera body, 2 batteries, 1 charger, 1 video cable, 1 USB cable.

PRICES SUBJECT TO CHANGE WITHOUT NOTICE.
ALL PRICES ARE PER DAY, UNLESS OTHERWISE INDICATED.



NIKON AUTOFOCUS LENSES

Wide Angle

- 14mm f/2.8 ED AF\$40.00
- 16mm f/2.8 AF-D Fisheye\$25.00
- 18mm f/2.8 AF-D\$25.00
- 20mm f/1.8 G AF-S\$25.00
- 20mm f/2.8 AF-D\$20.00
- 24mm f/1.4G ED AF-S N\$45.00
- 24mm f/1.8G G AF-S\$25.00
- 24mm f/2.8 AF-D\$20.00
- 28mm Aspheric f/1.4 AF-D\$40.00
- 28mm f/1.8G AF-S\$25.00
- 28mm f/2.8 AF-D\$20.00
- 35mm f/1.4G AF-S\$45.00
- 35mm f/2.0 AF-D\$20.00



Normal

- 50mm f/1.4 AF-S\$20.00
- 50mm f/1.8 AF-S\$15.00
- 58mm f/1.4G AF-S\$50.00
- 60mm f/2.8 Micro AF-S\$20.00

Telephoto

- 85mm f/1.4G AF-S N\$45.00
- 85mm f/1.4 AF-D\$30.00
- 85mm f/1.8 G AF-S\$30.00
- 105mm f/1.4E ED AF-S\$45.00
- 105mm f/2.8G ED-IF AF-S VR Micro\$35.00
- 105mm f/2.0 DC AF-D\$35.00
- 135mm f/2.0 DC AF\$35.00
- 180mm f/2.8 ED-IF AF-D\$25.00
- 200mm f/2.0 G ED-IF AF-S VR\$100.00
- 300mm f/4.0 ED-IF AF-D\$40.00
- 300mm f/2.8G ED VR II\$115.00
- 400mm f/2.8E FL ED VR\$175.00
- 400mm f/2.8E ED VR\$150.00
- 600mm f/4.0 ED-IF D AF-S1\$150.00
- 600mm f/4.0G AF-S VR\$175.00



PRICES SUBJECT TO CHANGE WITHOUT NOTICE.
ALL PRICES ARE PER DAY, UNLESS OTHERWISE INDICATED.



NIKON AUTOFOCUS LENSES



Zoom

- 14-24mm f/2.8 AF-S \$40.00
- 16-35mm f/4G ED AF-S VR N \$35.00
- 17-35mm f/2.8 AF-D/AF-S \$35.00
- 24-70mm f/2.8 G \$40.00
- 24-70mm f/2.8E ED VR \$45.00
- 24-120mm f/4 AFS VR \$40.00
- 28-105mm f/3.5-4.5 AF D \$25.00
- 28-300mm f/3.5-5.6G ED AF-S VR \$35.00
- 28-200mm f/3.5-5.6 D IF \$30.00
- 70-200mm f/2.8 VR FL \$50.00
- 70-200mm f/2.8G ED AF-S VR II... \$45.00
- 70-200mm f/2.8 VR \$40.00
- 75-300mm f/3.5-4.5 AF AIS \$30.00
- 80-400mm f/4.5-5.6 AFD VR \$45.00
- 200-400mm f/4G ED VR II \$125.00
- 200-500mm f/5.6E ED VR \$45.00

Nikon Teleconverters

- TC-14E II (1.4x) \$20.00
 - TC-17E II (1.7x) \$20.00
 - TC-20E III (2.0x) \$20.00
- (AF not possible with 500 / 600mm AF-S with the TC-20E)

DX Lenses*

- 10.5mm f/2.8G DX Fisheye \$40.00
- 17-55mm f/2.8 AF-S DX \$35.00
- 18-200mm f/3.5-5.6 AF-S DX VR ... \$30.00
- 18-105mm f/3.5-5.6 AF-S DX VR ... \$25.00
- 12-24mm f/4.0 G/AF-S DX \$35.00



Macro Lenses

- 60mm f/2.8D AF-S G \$25.00
- 105mm f/2.8G ED-IF AF-S VR \$35.00

Perspective Control (PC) Lenses

- 24mm f/3.5 PC-E Nikkor \$55.00
- 45mm f/2.8D ED PC-E \$55.00
- 85mm f/2.8D PC-E Micro \$55.00

*Not full-frame lenses.

PRICES SUBJECT TO CHANGE WITHOUT NOTICE.
ALL PRICES ARE PER DAY, UNLESS OTHERWISE INDICATED.



NIKON MANUAL LENSES & ACCESSORIES



Wide Angle

- 8mm f/2.8 Fisheye, PL Mount CALL
- 8mm f/2.8 Fisheye \$100.00
- 15mm f/3.5 AIS..... \$40.00
- 16mm f/2.8 Fisheye..... \$30.00
- 18mm f/3.5 AIS..... \$40.00
- 20mm f/2.8..... \$30.00
- 24mm f/2.0 AIS..... \$30.00
- 24mm f/3.5 PC-E..... \$55.00
- 28mm f/2.0 AIS..... \$30.00
- 28mm f/3.5 PC..... \$30.00
- 35mm f/1.4 AIS..... \$35.00
- 35mm f/2.8 PC..... \$30.00

Normal

- 50mm f/1.4..... \$25.00
- 50mm f/1.8..... \$20.00
- 58mm f/1.2 Noct. AIS \$40.00

Telephoto

- 85mm f/1.4 AIS..... \$35.00
- 85mm f/2.8 PC/TS..... \$35.00
- 105mm f/1.8 AIS \$30.00
- 105mm f/2.5 AIS \$24.00

Specialty Lens

- Lens Baby - Composer..... \$20.00



NIKON FLASHES & ACCESSORIES

Nikon Speedlites

- SB-5000 \$30.00
- SB-910 \$30.00
- SB-900 \$30.00
- SB-700..... \$25.00
- SC-29 Off-Shoe Cord \$10.00

Nikon Speedlite Modifier

- Gary Fong Lightsphere \$10.00

PRICES SUBJECT TO CHANGE WITHOUT NOTICE.
ALL PRICES ARE PER DAY, UNLESS OTHERWISE INDICATED.

FUJIFILM FUJIFILM MIRRORLESS CAMERAS



Fujifilm X-H2S Body

- 26.1MP APS-C X-Trans Stacked BSI Sensor
- 4:3 Open Gate Recording
- 7-Stop In-Body Image Stabilization
- 8K 30p, 4K 60p, FHD 240p 10-Bit Video

\$100.00

4K



Fujifilm X-H2 Body

- 40MP APS-C X-Trans Stacked BSI Sensor
- 4K 120p, 6.2K 30p, FHD 240p 10-Bit Video
- 7-Stop In-Body Image Stabilization
-

\$100.00

4K



Fujifilm X-T5 Body

- 40MP APS-C X-Trans CMOS 5 HR BSI Sensor
- 4K 60p, 6.2K 30p 4:2:2 10-Bit Video
- 7-Stop In-Body Image Stabilization

\$85.00

4K



Fujifilm X-T4 Body

- 26.1MP APS-C X-Trans BSI CMOS 4 Sensor
- X-Processor 4 Image Processor
- 5-Axis In-Body Image Stabilization

\$85.00

4K



Fujifilm VG-XT3 Vertical Battery Grip

- Accepts NP-W126S rechargeable lithium-ion Batteries
- Grip is also water, dust and freeze resistant

\$15.00



Fujifilm X100V Body

- 26.1MP APS-C X-Trans BSI CMOS 4 Sensor
- X-Processor 4 Image Processor
- Fujinon 23mm f/2 Lens

\$50.00

4K

All mirrorless cameras include; 1 camera body, 2 batteries, 1 charger, 1 video cable, 1 USB cable.

PRICES SUBJECT TO CHANGE WITHOUT NOTICE.
ALL PRICES ARE PER DAY, UNLESS OTHERWISE INDICATED.

FUJIFILM FUJIFILM LENSES & ACCESSORIES



- 8mm f/3.5R.....\$35.00
- 14mm f/2.8.....\$35.00
- 16mm f/1.4\$40.00
- 18mm f/2.0.....\$30.00
- 18mm f/1.4R.....\$40.00
- 23mm f/1.4R.....\$30.00
- 23mm f/2.0.....\$20.00
- 27mm f/2.8\$20.00
- 35mm f/1.4.....\$30.00
- 50mm f/1.0\$40.00
- 50mm f/2.0.....\$20.00
- 80mm f/2.8 Macro.....\$35.00
- 90mm f/2.....\$40.00
- 8-16mm f/2.8-4\$40.00
- 18-120mm f/4.....\$30.00
- 10-24mm f/4.....\$40.00
- 16-55mm f/2.8\$40.00
- 16-80mm f/4.....\$35.00
- 18-55mm f/2.8-4\$30.00
- 18-135mm f/3.5-5.6.....\$35.00
- 50-140mm f/2.8\$40.00
- 55-200mm f/3.5-5.8 ...\$30.00
- 70-300mm f/4-5.6.....\$35.00
- 100-400mm f/4.5-5.6..\$45.00
- 150-600mm f/5.6-8.....\$45.00

FUJIFILM ACCESSORIES



Fujifilm Teleconverters

- XF 1.4x TC WR\$20.00
- XF 2x TC WR\$20.00



Fujifilm Flash

- EF-X500 Flash\$25.00



Fujifilm FT-XH File Transmitter Grip

\$25.00

- Accepts NP-W235 rechargeable lithium-ion Batteries
- incorporates a secondary shutter release button, focus lever, AE-L button, AF-ON button, Q button, Fn Button, front and rear command dials

PRICES SUBJECT TO CHANGE WITHOUT NOTICE.
ALL PRICES ARE PER DAY, UNLESS OTHERWISE INDICATED.

FUJIFILM FUJIFILM MEDIUM FORMAT CAMERAS



Fujifilm GFX 100 II Body

- 102MP 43.8 x 32.9mm BSI CMOS Sensor
- X-Processor 5 Image Processor
- 4K/60p and 8K/30p 4:2:2 10-bit in-camera recording

CALL

8K



Fujifilm GFX 100S Body

- 102MP 43.8 x 32.9mm BSI CMOS Sensor
- X-Processor 4 Image Processor
- 4K30 Video; F-Log Gamma, 12-Bit Raw Out

CALL

4K



Fujifilm GFX 50S II Body

- 51.4MP 43.8 x 32.9mm CMOS Sensor
- X-Processor 4 Image Processor
- 3.69m-Dot OLED EVF

CALL



Fujifilm VG GFX 100 II VERTICAL GRIP

\$25.00

- For GFX 100 II Medium Format Camera
- Holds 2 x NP-W235 Batteries

Lenses

- | | | | |
|----------------------|---------|--------------------------|---------|
| • GF 23mm f/4..... | \$55.00 | • GF 110mm f/2 | \$55.00 |
| • GF 30mm f/3.5..... | \$45.00 | • GF 120mm f/4.0 Macro.. | \$55.00 |
| • GF 45mm f/2.8..... | \$45.00 | • GF 250mm f/4..... | \$70.00 |
| • GF 50mm f/3.5..... | \$40.00 | • GF 20-35mm f/4..... | \$50.00 |
| • GF 55mm f/1.7..... | \$50.00 | • GF 32-64mm f/4..... | \$55.00 |
| • GF 63mm f/2.8..... | \$45.00 | • GF 45-100mm f/4. | \$55.00 |
| • GF 80mm f/1.7..... | \$55.00 | • GF 100-200MM F5.6 ... | \$55.00 |



Tilt Shift Lenses

- GF 30mm f/5.6 T/S.....\$125.00
- GF 110mm f/5.6 T/S Marco.....\$125.00



Macro Extension Tubes

- MCEX 18G.....\$15.00
- MCEX 45G.....\$15.00

All mirrorless cameras include; 1 camera body, 2 batteries, 1 charger, 1 video cable, 1 USB cable.

PRICES SUBJECT TO CHANGE WITHOUT NOTICE.

ALL PRICES ARE PER DAY, UNLESS OTHERWISE INDICATED.

Panasonic PANASONIC MIRRORLESS CAMERAS & LENSES



Panasonic DC-GH6 Body

\$95.00

- 25.2MP Live MOS Micro Four Thirds Sensor
- 4K 60p 4:2:2 10-Bit Unlimited Recording
- 5.7K 60p, 4K 120p HFR, FHD 300p VFR
- ProRes 422 HQ, V-Log and DR Boost

4K



Panasonic DMC-GH5 II Body

\$85.00

- 20.3MP Live MOS Sensor with AR Coating
- DCI/UHD 4K 60p Video, 10-Bit Internal
- Pre-Installed V-Log L, No Crop 4K Video
- 6.5-Stop 5-Axis Dual I.S. 2

4K



Panasonic DMC-GH5S Body

\$100.00

- 10.28MP Multi Aspect Ratio MOS Sensor
- DCI 4K60p and Full HD 1080/240p Video
- Internal 4:2:2 10-Bit Long GOP
- V-Log L Gamma and HDR Hybrid Log Gamma

4K

MICRO 4/3 LENSES

Panasonic

- 8mm f/3.5 \$30.00
- 15mm f/1.7 \$35.00
- 20mm f/1.7 \$35.00
- 25mm f/1.7 \$30.00
- 42.5mm f/1.2 \$40.00
- 7-14mm f/4 \$30.00
- 12-35mm f/2.8 II \$30.00
- 14-42mm f/3.5-5.6 \$30.00
- 14-45mm f/3.5-5.6 \$30.00
- 14-140mm f/3.5-5.6 \$40.00
- 35-100mm f/2.8 \$40.00
- 100-300mm f/4.5-5.6.. \$30.00
- 100-400mm f/4-6.3 \$40.00

Sigma

- 19mm f/2.8 DN \$25.00
- 30mm f/2.8 DN \$25.00
- 60mm f/2.8 DN \$25.00

Olympus

- 12mm f/2 \$30.00
- 17mm f/1.8 \$30.00
- 25mm f/1.2 \$40.00
- 30mm f/3.5 Macro \$25.00
- 45mm f/1.8 \$30.00
- 60mm f/2.8 Macro \$30.00
- 75mm f/1.8 \$35.00
- 7-14mm f/2.8 \$40.00
- 12-40mm f/2.8 \$35.00
- 12-100mm f/4 \$40.00
- 40-150mm f/2.8 \$40.00

All mirrorless cameras include; 1 camera body, 2 batteries, 1 charger, 1 video cable, 1 USB cable.

PRICES SUBJECT TO CHANGE WITHOUT NOTICE.
ALL PRICES ARE PER DAY, UNLESS OTHERWISE INDICATED.



ZEISS LENSES (DSLR MOUNT)



Canon Mount

- 15mm f/2.8.....\$60.00
- 18mm f/3.5.....\$50.00
- 21mm f/2.8.....\$50.00
- 25mm f/2.0.....\$50.00
- 28mm f/2.0.....\$50.00
- 35mm f/2.0.....\$50.00
- 50mm f/1.4.....\$30.00
- 50mm Macro f/2.0\$30.00
- 55mm f/1.4 Otus.....\$60.00
- 85mm f/ 1.4.....\$50.00
- 85mm f/1.4 Otus.....\$60.00

Macro

- 50mm f/2.0.....\$30.00
- 100mm f/2.0\$50.00

Nikon Mount

- 15mm f/2.8.....\$60.00
- 18mm f/3.5.....\$50.00
- 21mm f/2.8.....\$50.00
- 28mm f/2.0.....\$50.00
- 35mm f/2.0.....\$50.00
- 50mm f/1.4.....\$30.00
- 85mm f/1.4.....\$50.00

Milvus Lenses

- 21mm f/2.8.....\$50.00
- 35mm f/2.0.....\$30.00
- 50mm f/1.4.....\$30.00
- 50mm f/2.0.....\$30.00
- 85mm f/1.4.....\$50.00



Zeiss Compact Prime Lenses

- 15.5-45mm T2.6 LWZ.2
- 15mm T2.9 CP.2
- 18mm f/3.6 C-prime
- 21mm f/2.9 C-prime
- 25mm f/2.9 C-prime
- 35mm f/2.1 C-prime

CALL FOR PRICE

- 50mm f/1.5 C-prime
- 50mm f/2.1 C-prime
- 85mm f/1.5 C-prime
- 85mm f/2.1 C-prime
- 100mm f/2.1 C-prime

PRICES SUBJECT TO CHANGE WITHOUT NOTICE.
ALL PRICES ARE PER DAY, UNLESS OTHERWISE INDICATED.

SIGMA SIGMA LENSES



- 8mm f/3.5 Fisheye \$40.00
 - 10-20mm f/3.5 DC* \$30.00
 - 12-24mm f/4.5-5.6 \$30.00
 - 14mm f/1.8 DG ART (EF Mount)..... \$40.00
 - 14mm f/2.8 ART (Sony FE Mount)..... \$40.00
 - 17-50mm f/2.8 EX DC OS HSM (EF & Nikon Mounts) \$30.00
 - 18-35mm f/1.8 DC* \$35.00
 - 24mm f/1.4 ART OG HSM (EF Mount) \$40.00
 - 35mm f/1.4 ART DG HSM (EF Mount) \$40.00
 - 50mm f/1.4 ART DG HSM (EF Mount) \$40.00
 - 50-100mm f/1.8 DC* \$40.00
 - 24-105mm f/4.0 DG OS (EF Mount)..... \$35.00
 - 120-300mm f/2.8 APO OS (EF Mount) \$75.00
 - 150-500mm f/5 \$30.00
 - 150-600mm f/5-6.3 Contemporary..... \$40.00
 - 150-600mm f/5-6.3 Sport (EF & Nikon Mounts) \$60.00
- *DC lenses not full frame.



SIGMA CINE LENSES

This cine lineup covers everything from wide angle to telephoto. The High Speed Zoom Line is compatible with Super35, the image size standard used by typical digital cinema cameras, while the FF High Speed Prime Line and FF Zoom Line are compatible with a full-frame image circle. These options enable cinematographers to shoot with a wide range of expressive purposes.

- 18-35mm T2 CALL
- 24mm T1.5 CALL
- 24-35mm T2.2 CALL
- 35mm T1.5 CALL
- 50-100mm T2 CALL
- 50mm T1.5 CALL
- 20mm T1.5 CALL
- 85mm T1.5 CALL

Tokina TOKINA LENSES

- 11-20mm f/2.8 DX..... \$30.00
- 11-20mm f/2.8 \$30.00
- 10-17mm f/3.5-4.5 \$30.00
- 11-16mm f/2.8..... \$35.00
- 16-28mm f/2.8 \$35.00



PRICES SUBJECT TO CHANGE WITHOUT NOTICE.
ALL PRICES ARE PER DAY, UNLESS OTHERWISE INDICATED.

ADAPTERS

metabones



Metabones attaches a Canon EF or Nikon G lens to a Sony NEX camera. It is referred to as a "Smart Adapter" because it retains electronic communication between the camera and lens and therefore provides automatic aperture control, EXIF data, image stabilization and autofocus. The adapter is powered by the camera body, so no external power source is required.

Metabones Adapters

- NEX - EF Mount..... \$30.00
- E - EF Speedbooster \$50.00
- E - EF Mark IV Mount \$30.00
- Micro 4/3 - EF Mount..... \$30.00
- Micro 4/3 - EF Speedbooster..... \$50.00
- E - Nikon G Mount..... \$30.00

PHASEONE PHASE ONE DIGITAL CAMERA BACKS

Phase One IQ4 150MP **\$600.00**

Full frame medium format sensor., 1.5x the size of crop sensor mirrorless medium format and 2.5x that of full frame DSLR, allow you to capture more data, providing more detail and impressive results.

Phase One IQ3 100MP Trichromatic **\$550.00**

Full frame medium format digital back. Capture images up to 100 megapixels with long exposure capabilities up to 60 minutes. CMOS sensor and Bayer Filter color technology.

Phase One IQ3 100MP **\$500.00**

100MP full frame CMOS sensor delivers unparalleled Phase One image quality built upon 16bit color depth, 15 stops dynamic range, ISO sensitivity up to 12800, and exposure times ranging from 1/4000th of a second to 60 minute exposures while still retaining the 1/1600th flash sync speed.



Phase One IQ280V **\$500.00**

Old style Hasselblad Mount



Phase One XF Medium Format Body **\$100.00**

- New, patent-pending Autofocus system HAP-1
- Flexible OneTouch user interface
- IQ3 digital back compatibility
- New 90° Prism viewfinder

PRICES SUBJECT TO CHANGE WITHOUT NOTICE.
ALL PRICES ARE PER DAY, UNLESS OTHERWISE INDICATED.

PHASEONE PHASE ONE LENSES

Blue Ring Lenses

- 35mm LS BR f/3.5 \$100.00
- 45mm LS BR f/3.5 \$100.00
- 55mm LS BR f/2.8 \$100.00
- 80mm LS BR f/2.8 \$100.00
- 110mm LS BR f/2.8 \$100.00
- 120mm LS BR f/4..... \$125.00
- 150mm LS BR f/3.5..... \$125.00
- 240mm LS BR f/4.5 \$125.00
- 40-80mm LS BR f/4.0-5.6 \$175.00
- 75-150mm LS BR f/4.0-5.6 \$125.00



PRICES SUBJECT TO CHANGE WITHOUT NOTICE.
ALL PRICES ARE PER DAY, UNLESS OTHERWISE INDICATED.

HASSELBLAD
CREATE TO INSPIRE

HASSELBLAD DIGITAL CAMERA BACKS



Hasselblad X1D-50c

50MP 43.8 x 32.9mm CMOS sensor in a mirrorless camera body.

Hasselblad Natural Color Solution to create phenomenal raw images with smooth tonal gradations thanks to 16-bit color depth and 14 stops of dynamic range. Sensitivity range of ISO 100-25600.

- Camera body\$150.00
- 45mm lens.....\$100.00
- 90mm lens.....\$125.00



Hasselblad H5X

\$175.00

The H5X incorporates H5 technology and versatility including optimized True Focus AF and improved grip design. It is compatible with H-system lenses, CF/CFH backs, numerous third party digital backs and four distinct viewfinders.

HASSELBLAD
CREATE TO INSPIRE

HASSELBLAD H SERIES LENSES



Hasselblad lenses use high performance central lens shutters, making them stable, quiet, and particularly useful for flash work at fast shutter speeds or many other tricky lighting situations. Hasselblad central shutter lenses deliver correct captures at flash sync speeds up to 1/500 sec.

- HCD 24mm f/4.8\$125.00
- HC 28mm f/4.....\$100.00
- HC 35mm f/3.5\$75.00
- HC 50mm f/3.5\$75.00
- HC 50mm II f/3.5\$100.00
- HC 35-90mm f/4.0-5.6.....\$100.00
- HC 50-110mm f/3.5-4.5 Zoom\$100.00
- HC 80mm f/2.8\$50.00
- HC 120mm f/4\$75.00
- HC 120mm II f/4.0\$100.00
- HC 150mm f/3.2.....\$75.00
- HC 210mm f/4\$75.00
- HC 300mm f/4\$100.00

PRICES SUBJECT TO CHANGE WITHOUT NOTICE.
ALL PRICES ARE PER DAY, UNLESS OTHERWISE INDICATED.

HASSELBLAD
CREATE TO INSPIRE

HASSELBLAD CAMERAS



Hasselblad 503CW

New mechanical body accepts CW winder. Has TTL flash control.
Uses all magazines, finders and lenses.

- Body only..... \$50.00
- CW Winder only with IR remote \$20.00
- IR Remote (for use with CW Winder) \$10.00



Hasselblad 555 ELD

Motorized body. Auto film advance.
Uses all mags, finders & lenses.

- Body only..... \$50.00

Samy's Camera **PRO RENTAL STAFF** will be happy to **CUSTOMIZE** rental packages upon request.

For long term rentals please inquire about **PACKAGE DISCOUNTS!**

PRICES SUBJECT TO CHANGE WITHOUT NOTICE.
ALL PRICES ARE PER DAY, UNLESS OTHERWISE INDICATED.

HASSELBLAD V SERIES LENSES

Wide Angle Lenses


- 30mm f/3.5 Distagon Fisheye (180° field).....\$75.00
- 40mm f/4.0 Distagon FLE Super Wide Angle..... \$50.00
- 50mm f/4.0 Distagon FLE Wide Angle..... \$50.00
- 60mm f/3.5 Distagon Wide Angle \$50.00

Normal Lenses

- 80mm f/2.8 Planar Normal..... \$40.00
- 100mm f/3.5 Planar Normal \$50.00


Telephoto Lenses

- 120mm f/4.0 Makro-Planar..... \$50.00
- 150mm f/4.0 Sonnar \$50.00
- 180mm f/4.0 Sonnar..... \$50.00
- 250mm f/5.6 Sonnar..... \$50.00

HASSELBLAD ACCESSORIES

Special Application Lenses

- 250mm f/5.6 CFI.....\$75.00
- 350mm f/5.6 C Tele Tessar\$75.00
- TC 1.4XE Teleconverter \$40.00
- Mutar 2X Teleconverter \$40.00
- Mutar 1.4 Teleconverter with shift control \$40.00


Hasselblad Film Magazines

- A12 Mag, 12 exp (120 film)..... \$20.00


Hasselblad Viewfinders

- PM5 Prism viewfinder (45°)..... \$20.00
- PM45 Prism viewfinder \$20.00



Mamiya MAMIYA CAMERAS



Mamiya 7 II Body

\$100.00

A 6x7cm AE rangefinder camera with interchangeable leaf shutter lenses.

- 43mm f/4.5 lens with optical viewfinder \$60.00
- 50mm f/4.5 with optical viewfinder \$50.00
- 65mm f/4.0 lens \$50.00
- 80mm f/4.0 lens \$50.00
- 150mm f/4.5 lens \$50.00



Mamiya RZ67 Pro-II Body

\$75.00

A 6x7cm, all-electronically controlled, medium format, single lens reflex camera with interchangeable revolving backs that accepts a Polaroid film holder. Also features motorized film advance and automatic exposure capabilities.

Accessories

- 120 Back \$20.00
- AE Prism Finder \$45.00
- L-Grip..... \$20.00
- Pro Shade \$12.00
- Extra 77 mounting ring..... \$3.00
- Winder \$30.00
- Dual Cable release \$15.00

Mamiya MAMIYA RZ LENSES



Wide Angle

- 37mm f/4.5Z Fisheye \$60.00
- 50mm f/4.5Z or ULD \$50.00
- 65mm f/4.0 L-A..... \$50.00
- 75mm f/3.5 L or Short Barrel..... \$50.00
- 75mm f/4.5Z PC \$50.00



Normal

- 90mm f/3.5 Z Normal..... \$50.00
- 110mm f/2.8Z Normal \$50.00
- 127mm f/3.8Z Normal..... \$50.00



Telephoto

- 140mm f/4.5Z Macro-Portrait \$50.00
- 150mm f/3.5Z Portrait..... \$50.00
- RZ/ZORK 150mm f/PC..... \$50.00
- 180mm f/4.5Z Telephoto \$50.00
- 180mm f/4.5 Soft Focus \$50.00
- 250mm f/4.5Z Telephoto \$50.00
- 360mm f/6.0 Super Telephoto \$50.00
- 500mm f/8.0Z Super Telephoto \$65.00



ApoChromatic Telephoto

- 210mm f/4.5Z APO \$55.00
- 250mm f/4.5Z APO \$75.00
- 350mm f/5.6Z AP..... \$75.00

Zoom

- 100-200mm f/5.2Z Zoom \$50.00

PRICES SUBJECT TO CHANGE WITHOUT NOTICE.
ALL PRICES ARE PER DAY, UNLESS OTHERWISE INDICATED.



Value Added
Reseller

APPLE MACINTOSH COMPUTERS



Apple Mac Pro

CALL

- 2.7 GHz 12-Core
- 1TB Flash Storage
- Dual AMD Firepro D700 CPU
- 32GB RAM



Apple Macbook Pro 16"

CALL

- 16" Liquid Retina XDR Display
- 64GB RAM
- 8TB SSD Storage
- M1 Max chip

APPLE MACINTOSH DISPLAYS



Apple 27" Thunderbolt Display

\$150

- 2560 x 1440 resolution
- 6 ports on the monitor include the Thunderbolt port, 3 powered USB 2.0 ports, a FireWire 800 port, a Gigabit Ethernet port, and a Kensington security slot



TETHER TOOLS



TetherBlock Digital A La Cart Case

\$50

- an integrated AC power inlet and a retractable shade
- a quick release TetherBLOCK
- spring-loaded hinged platform



Hyperjuice 130W USB-C Battery Pack

\$25

USB-C PD 3.0 (Max 100W), USB-C PD 3.0 (Max 60W),
USB-A QC 3.0 (Max 18W)



CalDigit TS3 Plus Thunderbolt 3 Dock

\$50

2x Thunderbolt 3 40Gb/s, DisplayPort 1.2, 5x USB-A & 1 USB-C
3.1 Gen 1 (5Gb/s), 1x USB-C 3.1 Gen2 (10Gb/s data only), Gigabit
Ethernet, UHS-II SD Card Slot (SD 4.0), Optical Audio (S/PDIF),
3.5mm Stereo Audio In & Out.

PRICES SUBJECT TO CHANGE WITHOUT NOTICE.
ALL PRICES ARE PER DAY, UNLESS OTHERWISE INDICATED.



EIZO DISPLAYS



ColorEdge CG247X

\$225

This 24.1-inch monitor is ideal for post production editing and video creation with precise color management and a range of features included to meet the needs of the media and entertainment industry.



ColorEdge CG276

\$225

27" Self-Calibrating color-critical monitor with 10-Bit simultaneous display, IPS technology, Digital Uniformity Equalizer, 3D look up table and built in calibrator.



ColorEdge CG277

\$225

With 99% Adobe RGB color space coverage, 10-bit simultaneous display, hardware calibration, this self-calibrating monitor is built to deliver optimal performance to professionals in printing, photography, and post production.



ColorEdge CG246

\$225

Delivers outstanding color and performance for professionals who work with still or moving pictures. It has a wide color gamut, built in calibration sensor, several presets for broadcast standards, and is backed by an industry leading 5-year warranty.

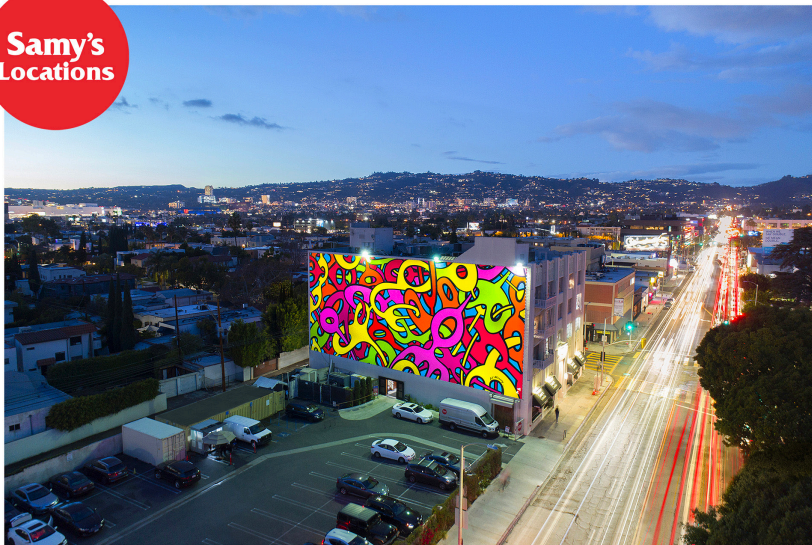
Matthews Monitor Mount (baby adapter)

\$15

PROFESSIONAL LOCATION SERVICES

24 HOUR CONCIERGE SERVICE

**Samy's
Locations**



WE OFFER DELIVERY AND PICKUP
FOR ALL OF YOUR PRODUCTION NEEDS!

PHOTO • LIGHTING • CAMERAS
MOTION • STYLING • PRODUCTION SUPPLIES
24-HOUR SUPPORT/7 DAYS A WEEK

CONTACT US FOR
CUSTOM QUOTES & PACKAGES!

LOS ANGELES

310.795.0043

LOCATIONS@SAMYS.COM

SAMY'S RENTAL LOCATIONS

Los Angeles

431 S. Fairfax Ave., Los Angeles, CA 90036

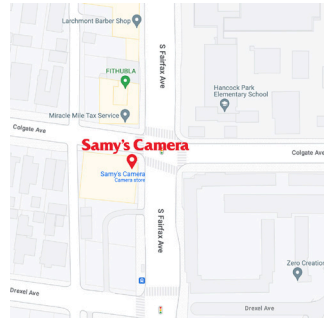
Tel: (323) 938-4400

Fax: (323) 938-0947

Email: rentals@samys.com

Rental Hours: Mon - Fri: 9am - 6pm

Rentals is CLOSED on Saturday & Sunday.



Playa Vista

12636 Beatrice St., Los Angeles, CA 90066

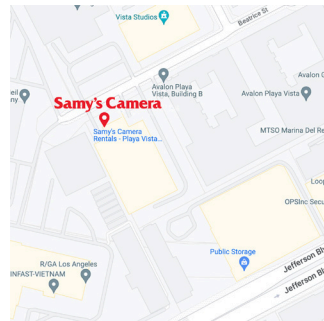
Tel: (310) 450-7062

Fax: (310) 450-3832

Email: pvrentals@samys.com

Rental Hours: Mon - Fri: 8am - 5pm

Rentals is CLOSED on Saturday & Sunday.



Pasadena

1759 E. Colorado Blvd., Pasadena, CA 91103

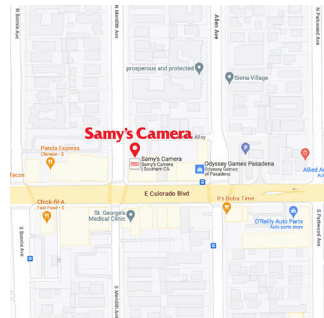
Tel: (626) 796-3300

Fax: (626) 432-6731

Email: pdrentals@samys.com

Rental Hours: Mon - Fri: 10am - 6pm

Rentals is CLOSED on Saturday & Sunday.



SAMYS.COM/RENT

SAMY'S RENTAL LOCATIONS

Santa Ana

3309b S. Bristol St. Santa Ana, CA 92704

Tel: 714-557-9400

Email: sarentals@samys.com

Rental Hours: Mon - Fri: 10am - 6:30pm

Rentals is CLOSED on Saturday & Sunday.



Samy's Locations

24-Hour Premium Rental Service

Professional Location Rental Services

Tel: (310) 795-0043

Email: locations@samys.com



SAMYS.COM/RENT

For almost 50 years Sammy's Camera has been the leader in high quality imaging products and the ultimate resource for both the professional and amateur photographers and videographers. Knowledgeable staff, exceptional customer service and an expansive inventory that is constantly being updated are many reasons that Sammy's Camera has a loyal following.

Founded in 1976 the company has grown to 4 locations located throughout Southern California, with its flagship store located on Fairfax Boulevard in the heart of Los Angeles. Each location is fully stocked with the latest and most exciting selections of photographic, video and electronic equipment available.

Sammy's Camera Rentals stocks and supports a full range of still and motion cameras, lenses, lighting, stabilization and grip equipment. SCR is the west coast's "one-stop" destination for all your industry needs.

Our mission and ultimate goal is provide the creative community with a rental source that provides a large inventory of the latest equipment as well as rental personnel that can help you with your equipment needs. Our gear goes through rigorous quality control testing and is maintained by only factory service providers. Our professional staff will be happy to help you with any questions you may have, and we will do our best to work within your budget.

We look forward to working with you.

Sammy's Camera Rental Staff

Weekend Rental

Pick-Up Rental after 3pm on Friday and Return Rental the following: Monday before 11am and pay for 1 Day Rental.

Daily Rates

Pick-up *BEFORE* 3 pm and return within 24 hours for 1 day rental charge.

Pick-up *AFTER* 3 p.m. and Rental begins next day.

Return must be made before 11am next day.

(e.g. Pick-up Monday after 3pm, return Wednesday by 11am)

Weekly Rates

3 day week: Keep Rental for 7 consecutive days and pay for 3 days.

Samy's Camera PRO RENTAL STAFF will be happy to **CUSTOMIZE** rental packages upon request.

For long term rentals please inquire about PACKAGE DISCOUNTS!

REQUIREMENTS FOR RENTING

- ◆ IDENTIFICATION: Valid Driver's License or Passport (picture ID)
- ◆ COLLATERAL DEPOSITS: (a.) Credit Card deposit for the full replacement value of equipment, or (b.) Certificate of Insurance (see certificate of insurance requirements.). (c.) A credit card is required to cover any deductible and to guarantee payment.
- ◆ ACCEPTED CREDIT CARDS: Visa, MasterCard, American Express or Discover Card. Note: We discourage the use of check cards or debit cards for collateral purposes.
- ◆ CHECKS: Samy's Camera does not accept checks for collateral deposits.
- ◆ INSURANCE: We require insurance on all orders valued over \$10,000.00 or credit card to cover deposit.
- ◆ CERTIFICATE OF INSURANCE REQUIREMENTS:
 - (a.) Samy's Camera must be named the Loss Payee, as well as additionally insured: (Use the 431 South Fairfax Avenue, Los Angeles, CA 90036 address).
 - (b.) General Liability Coverage must include, explicitly, miscellaneous rented equipment or rented equipment, as well as property covered off premises.
 - (c.) Policies with Unattended Vehicle Disclaimers will NOT be accepted.
 - (d.) All certificates and attached forms are subject to the verification and approval process by the management before the equipment is released. All certificates and attached forms need to be approved 24 hrs before rental pick-up.
 - (e.) A credit card is REQUIRED to cover any insurance deductible as well as to guarantee rental payment. (See Credit Card requirements listed above). Name on policy must match credit card. Insurance coverage must extend coverage a minimum of one week past the scheduled return dates.

Insurance certificates from carriers outside the United States will not be accepted.

REQUIREMENTS FOR RENTING

- ◆ FEES: All prices in this catalog are per day. A weekend is charged as one day. A week is charged as 3 days, depending on equipment. Monthly rates are available upon request. Prices are subject to change without notice.
- ◆ OUT OF TOWN RENTALS: When the equipment is shipped by Samy's, the minimum billing is two working days. Rentals are shipped with air freight prepaid by the customer on the day of their choice. The equipment is to be returned via prepaid air freight and must be marked for delivery to Samy's Camera. We are not responsible for delays caused by the carrier. In the event of such delays, the renter is still responsible for all transportation and rental charges. If it is critical that the equipment be received by a certain date, we suggest shipping at least 48 hours in advance. NOTE: All equipment is thoroughly tested and operated before shipment. Air handling can be very hard on equipment and totally out of our control. In the event of malfunction, the renter is still responsible for transportation, rental costs, and any damage.
- ◆ LOSS OR THEFT: Renters will be charged at the day rate on equipment that is lost or stolen until Samy's Camera is reimbursed for the replacement cost.
- ◆ SPARE LAMPS: There is no charge for spare lamps when available provided that burnt-out bulbs are returned. A charge will be made for missing lamps, broken lamps or filaments, or excessive burnouts.
- ◆ RESERVATIONS & CANCELLATIONS: Please call well in advance to reserve equipment for a future pickup. We cannot guarantee availability on short notice. Failure to cancel your order 24 hours prior to picking up will result in a full-days rental charge.

TERMS & CONDITIONS

Renter hereby rents from Samy's Camera, Inc. ("Samy's"), photographic equipment and accessories ("Equipment") and, in doing so, agree to the following terms and conditions:

1. If Renter / Renter's Agent is picking up the Equipment in person, Renter / Renter's Agent has examined the Equipment prior to signing this agreement and that the Equipment is in good order, condition and repair. Renter agrees that Renter acting alone selected the Equipment. If the Equipment is lost or damaged, Renter agrees that Samy's shall charge Renter's credit card for (1) all costs to repair the Equipment, or (2) the stated value of the Equipment as listed on the rental invoice. Samy's shall decide, in its sole discretion, whether to repair or replace the Equipment.

2. Renter agrees to return the Equipment to Samy's on or before the due date shown in the same good order, condition and repair as when received. If Renter fails to return the Equipment when due or fails to pay rental fees, Samy's Rental at its sole option, shall have the right to recover the Equipment from the Renter or to charge renter's credit card for the stated value of the Equipment. Renter shall pay all damages, accrued rental fees, costs and reasonable attorney's fees incurred by Samy's Rental.

3. Renter agrees to pay Samy's the rental fee listed on the rental invoice for each Rental Day or part thereof that Renter holds the Equipment. This includes the time that any damaged Equipment is being repaired at Renter's expense. Samy's will try to advise Renter the estimated time to repair, which could be 10 days or longer depending on the nature of the damage.

4. Rental Day: For Equipment picked up before 3:00 p.m. the rental Day shall begin at the time the Equipment is received by Renter and shall end at the same time on the next calendar day. For equipment picked up after 3:00 p.m. Monday through Thursday, the first rental day begins at the time of pick up and ends at 11:00 a.m. on the second calendar day after pick up. (For example if Equipment is picked up at 4:00 p.m. Monday, the Rental Day ends at 11:00 a.m. on Wednesday.) For Equipment picked up after 3:00 p.m. on Friday, the Rental Day ends at 11:00 a.m. on the following Monday.

5. Weekly Rates: In some instances qualified Renters may be offered a Weekly Rate for a 3-day-week (Equipment is kept for 7 consecutive calendar days for a 3 day rental fee) or for a 4-day-week (Equipment is kept for 7 consecutive calendar days for a 4 day rental fee). Qualification for either Weekly Rate is in the sole discretion of Samy's.

6. Samy's shall retain title to the Equipment at all times. Renter's failure to return Equipment may constitute a crime and may subject Renter to criminal prosecution in addition to payment of stated value of the Equipment.

7. Renter agrees to notify Samy's at least 24 hours in advance of any cancellations. Renter agrees that Samy's shall charge Renter's credit card for one day's rental of the Equipment if the order is cancelled less than 24 hours in advance, or if the Equipment is not picked up at the agreed-upon date and time.

8. **INSURANCE:** Renter has received a copy of Samy's Insurance requirements and agrees to insure and provide evidence of coverage in compliance with its terms.

9. **LIMITATION OF LIABILITY AND INDEMNIFICATION.** NEITHER SAMY'S NOR ANY OF ITS OFFICERS, DIRECTORS, EMPLOYEES OR AGENTS SHALL BE LIABLE FOR ANY LIABILITY, CLAIM LOSS, DAMAGE (DIRECT, INDIRECT, SPECIAL, INCIDENTAL, PUNITIVE OR CONSEQUENTIAL), OR EXPENSE OF ANY KIND OR NATURE ARISING FROM OR CAUSED, DIRECTLY OR INDIRECTLY, BY EQUIPMENT OR ANY INADEQUACY THEREOF, FOR ANY PURPOSE, OR ANY DEFICIENCY OR DEFECT (LATENT OR PATENT) THEREIN, DELAY IN PROVIDING OR FAILURE TO PROVIDE ANY THEREOF, OR ANY INTERRUPTION OR LOSS OF SERVICE OR USE THEREOF, OR ANY LOSS OF BUSINESS, OR ANY DAMAGE WHATSOEVER AND HOWEVER CAUSED. THIS INCLUDES WITHOUT LIMITATION ANY ASSOCIATED LOSS OR DAMAGE TO WORK PRODUCT EMBODIED IN ANY FORM OF MEDIA (WHETHER NOW KNOWN OR LATER DISCOVERED), LOSS OF REVENUE OR ANTICIPATED REVENUE OR PROFITS, LOST BUSINESS OR SALES, OR COST OF SUBSTITUTE SERVICES, EVEN IF SAMY'S OR ITS REPRESENTATIVE HAS BEEN ADVISED OF THE POSSIBILITY OF SUCH DAMAGES. IN NO EVENT SHALL THE TOTAL LIABILITY OF SAMY'S TO RENTER FOR ALL DAMAGES, LOSSES AND CAUSES OF ACTION (WHETHER IN CONTRACT OR TORT) ARISING FROM THIS RENTAL AGREEMENT EXCEED THE FEE FOR ONE RENTAL DAY. RENTER SHALL DEFEND, INDEMNIFY AND HOLD HARMLESS SAMY'S CAMERA, ITS OFFICERS, DIRECTORS, AGENTS, AND EMPLOYEES

TERMS & CONDITIONS

(COLLECTIVELY, "SAMY'S") FROM AND AGAINST ANY AND ALL LIABILITY, SUITS, CLAIMS, LOSSES, DAMAGES, DEFICIENCIES, ACTIONS, JUDGMENTS, INTEREST, AWARDS, PENALTIES, FINES, COSTS OR EXPENSES OF WHATEVER KIND, INCLUDING ATTORNEYS' FEES, THE COST OF ENFORCING ANY RIGHT TO INDEMNIFICATION HEREUNDER AND THE COST OF PURSUING ANY INSURANCE PROVIDERS, ARISING OUT OF OR RESULTING FROM ANY THIRD-PARTY CLAIM AGAINST SAMY'S RELATING IN ANY WAY TO THE RENTAL OF THE EQUIPMENT FROM SAMY'S.

10. **DISCLAIMER OF WARRANTIES.** SAMY'S DOES NOT MAKE, AND SHALL NOT, BY VIRTUE OF HAVING RENTED THE EQUIPMENT UNDER THIS CONTRACT, BE DEEMED TO HAVE MADE ANY REPRESENTATION OR WARRANTY, WHETHER WRITTEN OR ORAL OR EXPRESSED OR IMPLIED, AS TO THE MERCHANTABILITY, FITNESS (FOR USE OR FOR ANY PARTICULAR), DESIGN OR CONDITION OF, OR AS TO THE QUALITY OF THE MATERIAL OR WORKMANSHIP IN THE EQUIPMENT. THE EQUIPMENT IS PROVIDED "AS IS" AND HAS BEEN SELECTED BY RENTER ALONE.

11. Renter agrees to operate the Equipment in accordance with manufacturer's operating procedures. Renter is solely responsible for requesting, obtaining and following manufacturer's operating procedures.

12. Renter agrees not to assign or transfer this rental agreement or the Equipment.

13. Samy's Rental will inspect the equipment when returned and notify renter within 72 hours after the return of any damage to the equipment. Renter is responsible for all damages and repair costs.

14. In any action to interpret or enforce this agreement, the prevailing party may recover reasonable attorney's fees incurred in said action.

15. **ARBITRATION AND WAIVER OF CLASS ACTION.** Renter agrees that the laws of the State of California, excluding its conflicts-of-law rules, shall govern this agreement. Any controversy or claim arising out of or relating to this agreement that is in excess of Ten Thousand Dollars (\$10,000) shall be settled by arbitration administered by the American Arbitration Association under its Commercial Arbitration Rules conducted in Los Angeles County, California, and judgement on the award rendered by the arbitrator(s) may be entered in any court having jurisdiction thereof. You consent to jurisdiction of the state and federal courts of California for enforcement of this arbitration provision. Renter further agrees that the exclusive resolution of disputes is through individual legal action on Renter's own behalf instead of through any class or representative action. Even if the applicable law provides otherwise. Renter agrees that any lawsuit against Samy's whatsoever shall be litigated by you individually and not as a member of any class or as part of a class or representative action, and you expressly agree to waive any law entitling you to participate in a class action.

16. Missing or damaged Barcodes and/or Shockwatches will be charged a \$10.00 per item replacement charge.

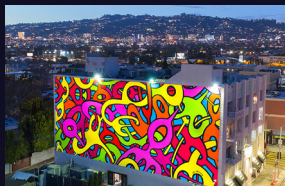
17. Renter has read and understands these Terms and Conditions and agrees to be bound by them. No Terms or Conditions may be waived or amended except in writing signed by Samy's Rental. Samy's Rental retains the right to terminate this Rental Agreement at any time, with or without notice.

18. Renter authorizes Samy's Camera, Inc. to charge Renter's credit card for collateral deposits up to the amount of the full retail replacement value of the equipment as determined by SAMY'S CAMERA.

Renter understands THAT the collateral deposit taken may not reflect the replacement costs of the equipment rented; however the renter is still responsible for all Equipment being returned in the same condition when it was rented and guarantees payment to SAMY'S CAMERA, INC. for any and all damages, repairs, replacement costs and rental fees associated with such equipment as determined by SAMY'S CAMERA.

Samy's Camera

RENTAL LOCATIONS



LOS ANGELES

(323) 938-4400 • rentals@samys.com
431 S. Fairfax Ave.



PLAYA VISTA

(310) 450-7062 • pvrentals@samys.com
12636 Beatrice St.



PASADENA

(626) 796-3300 • pdrentals@samys.com
1759 E. Colorado Blvd.



SANTA ANA

714-557-9400 • sarentals@samys.com
3309b S. Bristol St.

Samy's
Locations

PROFESSIONAL LOCATION SERVICES

(310) 795.0043 • locations@samys.com